

- phase one
- ADDITION TO EDUCATION WING
  - FELLOWSHIP HALL EXPANSION
  - FRONT PAVEMENT TO BE REMOVED
  - FELLOWSHIP WING EXPANSION

## PHASE TWO SITE PLAN

### ST JOAN OF ARC ADDITIONS AND ALTERATIONS

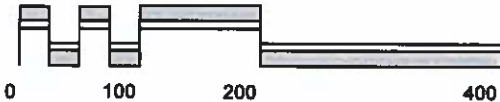
YORK COUNTY VIRGINIA  
17 JAN 2022

HOPKE & ASSOCIATES  
ARCHITECTURE PLANNING INTERIORS

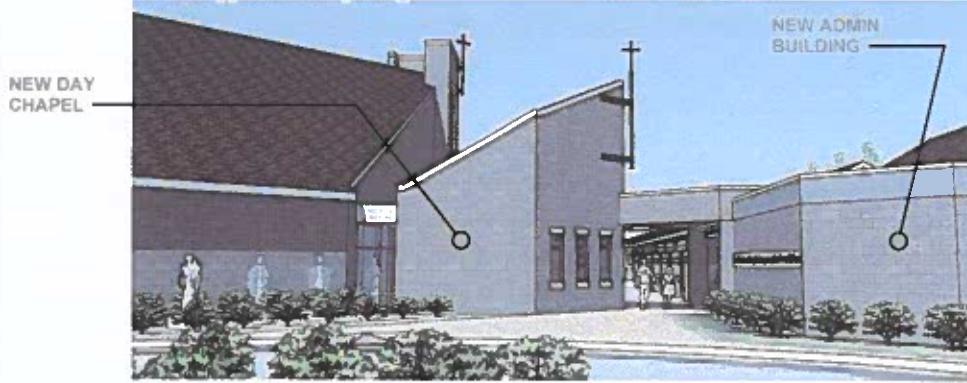
1158 JAMESTOWN ROAD  
WILLIAMSBURG, VA 23185  
757-228-1100  
www.hopka.com



H&A #36099



view on approach from parking



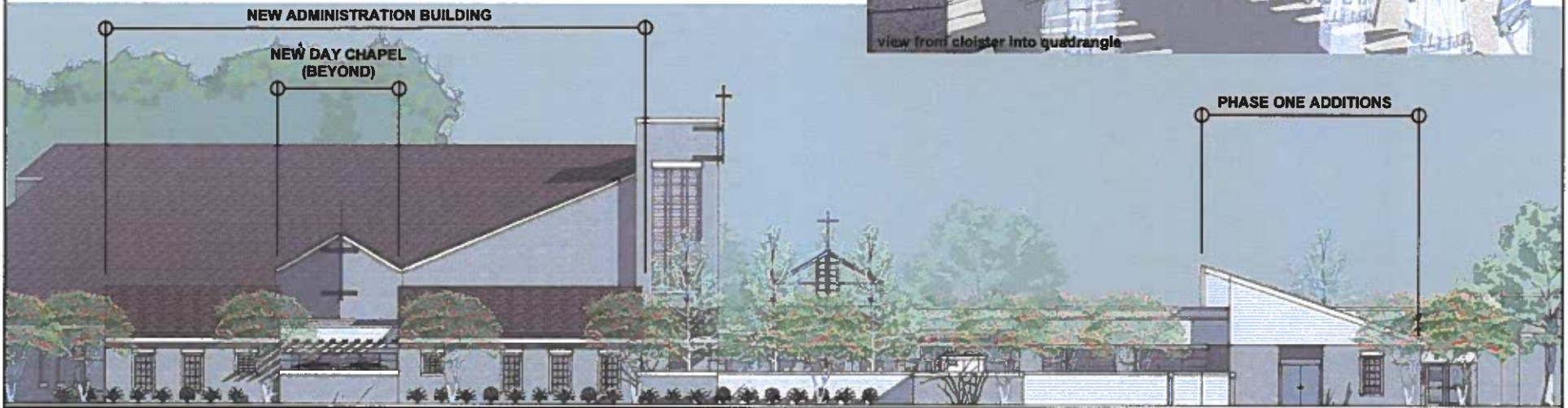
NEW DAY CHAPEL

NEW ADMIN BUILDING



NEW DAY CHAPEL

view from cloister into quadrangle



NEW ADMINISTRATION BUILDING

NEW DAY CHAPEL (BEYOND)

PHASE ONE ADDITIONS

elevation view from Harris Grove Lane

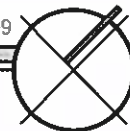
# PHASE TWO EXTERIOR

## ST JOAN OF ARC ADDITIONS AND ALTERATIONS

HOPKE & ASSOCIATES  
ARCHITECTURE PLANNING INTERIORS

1156 JAMESTOWN ROAD  
WILLIAMSBURG, VA 23186  
757-228-1100  
www.hopka.com

H&A #36099



YORK COUNTY VIRGINIA  
17 JAN 2022

